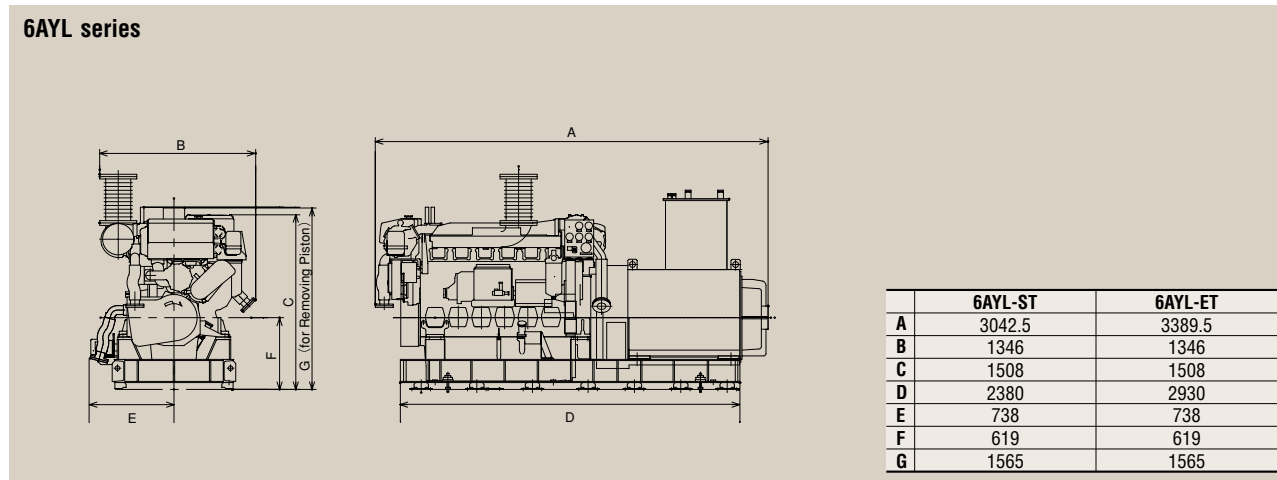
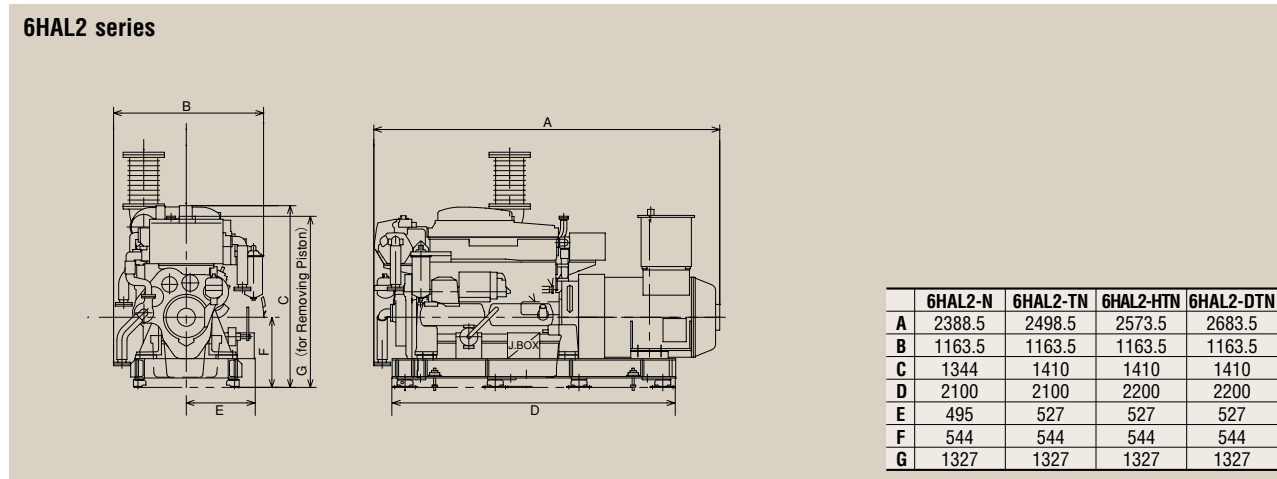
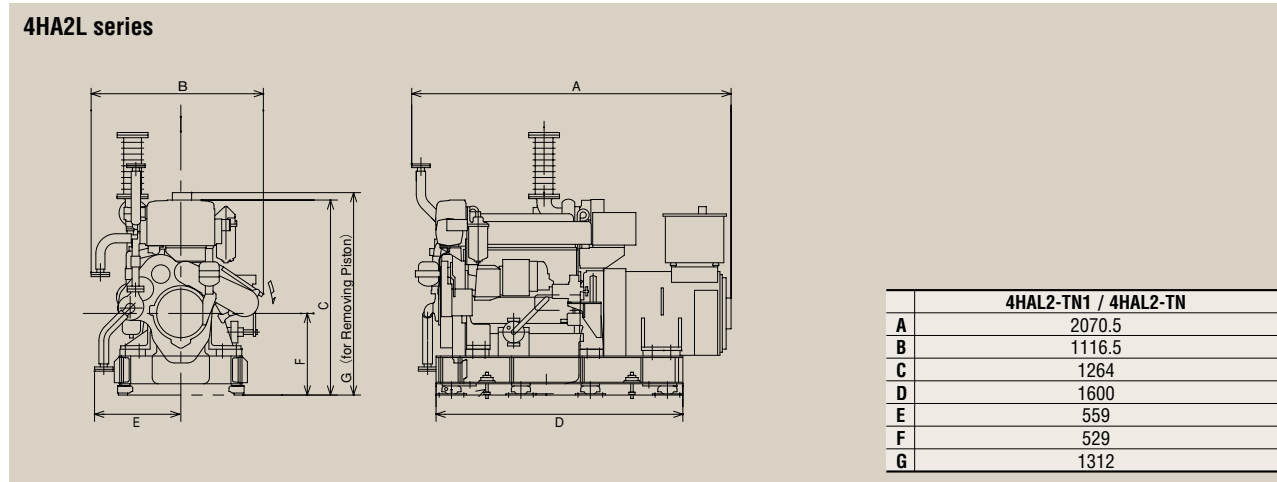
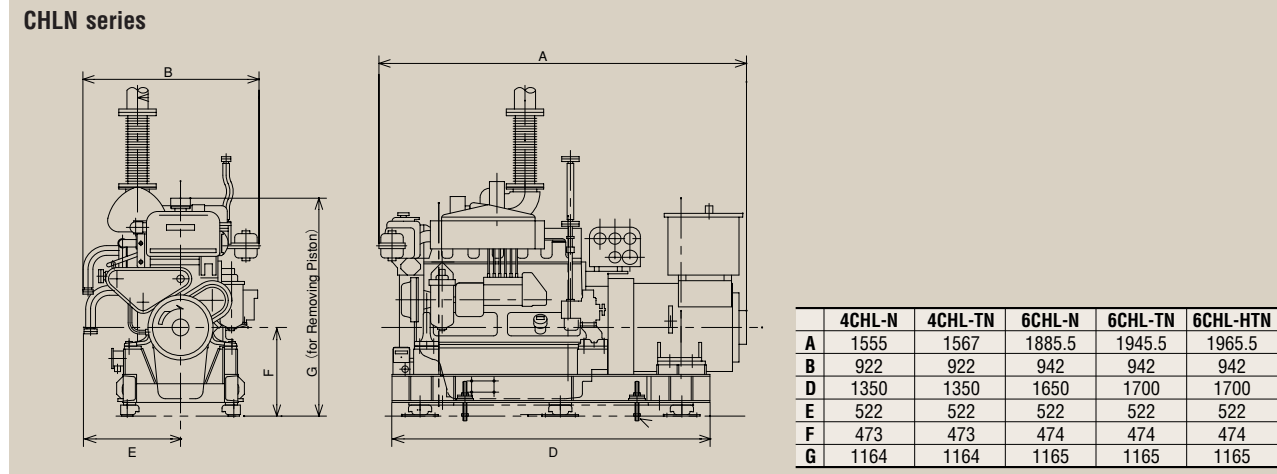
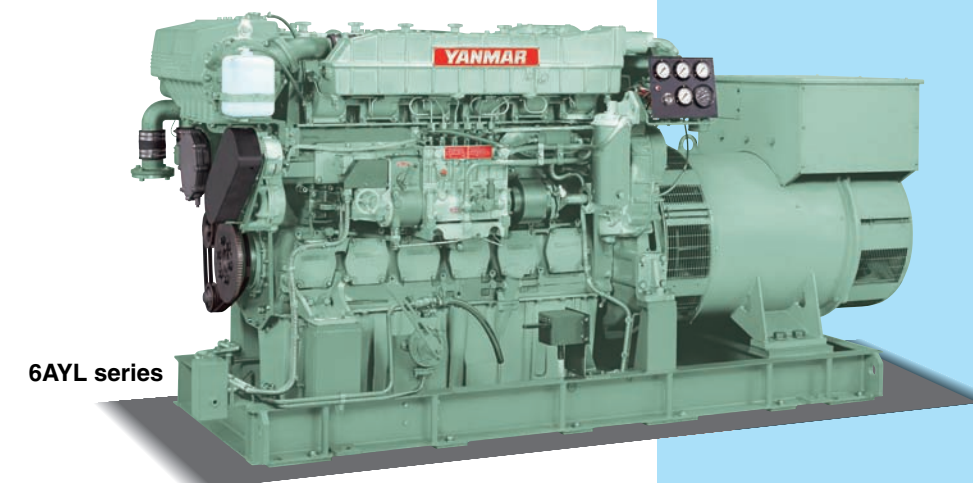
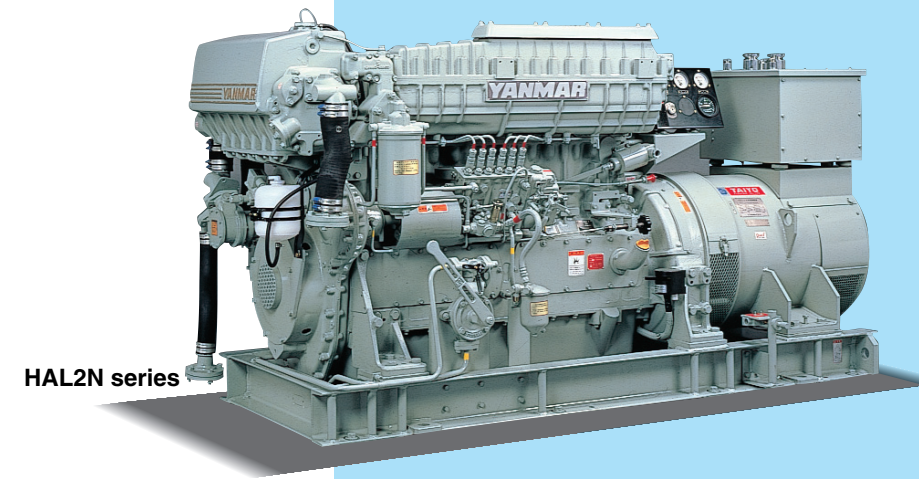
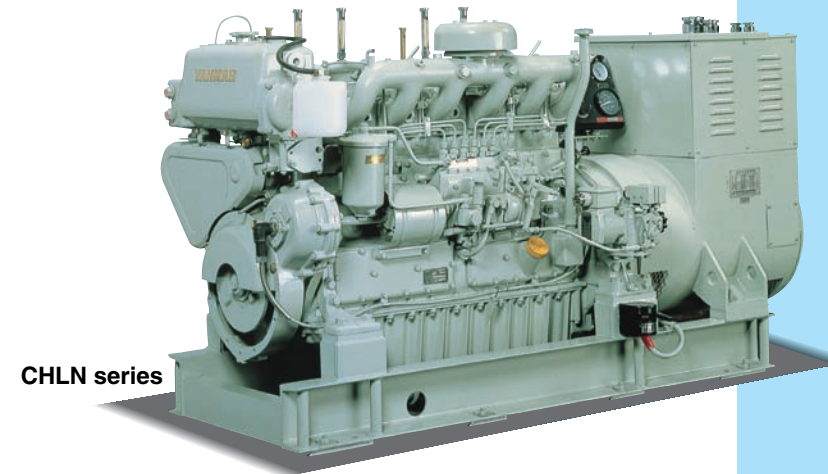


GENERATOR SET DIMENSIONS FOR YOUR REFERENCE Unit:mm
Generator / engine dimensions shown below may depending on generator make and model



MARINE AUXILIARY DIESEL ENGINES

CHLN series 38~120hp
HAL2N series 98~414hp
AYL series 480~668hp



ACCESSORIES

●: Standard △: Option —: Not available

Name of accessories	Q'ty	4CHL		6CHL			4HAL2		6HAL2				6AYL	
		-N	-TN	-N	-TN	-HTN	-TN1	-TN	-N	-TN	-HTN	-DTN	-ST	-ET
Instrumental panel (attached to engine)	Tachometer with hour meter	1		●					●					●
	Lubrication oil pressure gauge	1		●					●					●
	Fresh water pressure gauge	1		●					●					●
	Sea water pressure gauge	1		●					●					●
	Boost gauge	1	—	●	—	●	●	—		●				●
Starter switch	1			●					●				●	
Cooling system	Sea water pump	1		●					●					●
	Centrifugal type fresh water pump	1		●					●					●
	Heat exchanger	1		●					●					●
	Fresh water reservoir	1		●					●					●
	Thermostat for fresh water	1		●					●					●
	Emergency use sea water inlet	1		●					●					●
	kingston cock (wooden vessel or steel vessel)	1		△					△					△
Lubrication system	Lubrication oil pump	1		●					●					●
	Lubrication oil cooler	1		●					●					●
	Lubrication oil thermostat	1		—					—					—
	Lubrication oil filter	1		●			●			—				—
	oil filter Tandem switch type	2		—			—			●				●
	Lubrication oil pressure regulating valve	1		●					●					●
	Lubrication oil manual priming device to be mounted on engine bed	1		△					●					●
Lubrication oil inlet and outlet joint for semi dry sump	1set			△					△				△	
Fuel system	Paper filter type fuel strainer	1		●					●					●
	Drain separator to be mounted on vessel	1		●					●					●
	Primary fuel strainer to be mounted on vessel	1		△					△					△
Turbocharging system	Intake air filter	1	—	●	—	●		●	—		●			●
	Exhaust gas outlet expansion joint from engine	1	—	●	—	●				●				●
	Emergency exhaust gas outlet after removal of turbocharger	1	—	△	—	△	△	—		△				△
Electrical equipment	Starter motor DC24V	—				4.0kW x 1		5.5kW x 1			6.0kW x 1		7.0kW x 1	
	Alternator DC24V600W	1			△					●			●	
	Battery switch to be mounted on engine bed	1			●					●			●	
Thermometer	Exhaust gas at outlet of each cylinder	—	●	—	●	—				●			●	
	Exhaust gas at inlet of turbocharger	—	—	●	—	●	△	—		△			△	
	Cooling water outlet	1								●			●	
	Lubrication oil at cooler inlet	1		●						●			●	
Lubrication oil at cooler outlet	1		△						△			△		
Electrical governor for parallel operation (wiring is to be local procurement)	1			△					△				△	
Exhaust piping	Expansion joint for piping	1			△					△			△	
	Silencer	1			△					△			△	
Compressed air starting device	1set			△					△			△		
Remote control device	1set			△					△			△		
Others	Breather device for crankcase	1		●					●				●	
	Alarm switch for low lubrication oil pressure & high temp cooling water	1		●					●				●	
	Periodical replace parts	Fuel filter element	1		●					●				●
		Lubrication oil filter element	—		●					●				●
	Anti-corrosion zincs	1set		△						△			△	
Vee belt for alternator drive	1		△						●			●		
Vee belt for sea water pump device	2		—						—				●	

Note: All data subject to alteration without notice.

YANMAR CO.,LTD.
1-32, Chayamachi, Kita-ku, Osaka 530-8311 JAPAN
Telephone: 06-6489-8063 Facsimile: 06-6489-1082
<http://www.yanmar.co.jp>

Photograph may show optional equipment.

